

ENVIRONMENTAL

code of practice

for the ports of
**FALMOUTH
TRURO &
PENRYN**



FALMOUTH
HARBOUR
COMMISSIONERS



ST MAWES PIER
& HARBOUR
COMPANY

THE FAL ESTUARY



The Fal estuary is full of contrasts, both in terms of its landscape and wildlife and the ways in which the estuary is used. It is this mixture of human activities and the rich diverse wildlife that makes it a unique and valuable place.

It is one of the busiest harbours in Cornwall, supporting a wide range of commercial and recreational activities. Between 4000-5000 yachts pass through Carrick Roads every year, each one sailing over some of Britain's most important sites for marine life.

At King Harry Passage, the sheltered waters of the Fal are not only home to wildfowl and wading birds, but also to laid up ships taking advantage of the deep water channel.



CODE OF CONDUCT



The Harbour Authorities are responsible for providing waste reception facilities for vessels, please refer to the map for location of these facilities.

To help keep the estuary free of litter, everyone can help by disposing of their litter responsibly:

- Do not throw anything over the side, even biodegradable rubbish can collect on the shoreline. Bottles, cans and plastics are especially dangerous to both humans, birds and animals.
- The disposal of plastics at sea is illegal. Birds and fish mistake small pieces of plastic for food and discarded fishing line, nets and ropes are particularly hazardous to both birds, seals and dolphins. Plastic bags, ropes and sheeting can also become entangled in propellers and block cooling water intakes.
- Oil and fuel can enter the water by a number of ways, mainly through re-fuelling operations and the pumping of bilges.
- Please take great care to ensure that you minimise the risk of fuel spills and make sure you do not pump contaminated bilge water over the side.
- Please use absorbent materials, rags and drip trays to prevent fuel or oil spillages. There are recycling centres on the estuary, please see map for details.
- If you do accidentally spill oil or fuel, please notify the Harbour Offices.
- All boat owners are requested to use shoreside facilities as much as possible to reduce the input of sewage discharges. Please see map for location of facilities.



- Active compounds found in anti-fouling paints are by their nature toxic to aquatic life. However, these compounds are designed to enter the water from the boats hull in a controlled manner. Spillages and debris, which enter the water from maintenance or application are uncontrolled and could have unwanted effects on other non-fouling aquatic plants and wildlife.
- Excessive abrasion or hosing on your boat may increase the loss of the active component of the paint. Do not allow run-off to enter waterways. Collect hosing debris and scrapings and dispose of them safely.
- Products containing TBT (Tributyltin) can only be used on vessels over 25 metres.
- The Harbour Authorities wish to ensure that disturbance to wildlife is kept to a minimum and wherever possible reduced.
- Moorings are kept away from areas of Special Scientific Interest, eg. Fal-Ruan Creek and Malpas/Truro basin.
- Please take note of the sensitive areas identified on the map and avoid anchoring in these areas.
- Waterski areas are defined to avoid the quieter creeks, and speed restrictions in the more sensitive areas ensure minimum disturbance. Please see map.
- Make sure dogs are kept well clear of birds and other animals, particularly when walking on the coastal footpaths or areas of foreshore.
- All stranded marine mammals, whether dead or alive should be reported immediately to RSPCA on (01872) 573856.

THE PORTS OF FALMOUTH, TRURO & PENRYN

Key:

- Waste Disposal Sites
- Recycling Facility
- Disposal Facility for Batteries
- Chemical Sewage Disposal
- Water Ski Area
- Sensitive area for Moorings and Anchorages



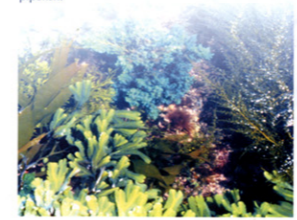
For more information contact Harbour Offices:
TRURO 01872 272130
FALMOUTH 01326 312285
ST MAWES 01326 270553

S. A. C.



The Fal along with the Helford River and parts of Falmouth Bay have been recognised as one of the finest sites in Europe for their marine wildlife. They have been selected as a candidate Special Area of Conservation (SAC), a European designation to protect rare and threatened wildlife both on land and at sea.

The SAC has been designated for the range of habitats supported by the Fal: saltmarshes, sandbanks and mudflats. These in turn support a wide range of species, including calcified seaweed or maerl, and eelgrass which is an important nursery ground for the fish and cuttlefish and home for seahorses and pipefish.



BAIT DIGGING



Bait digging is covered under Harbour byelaws and commercial bait digging is not allowed within the areas that are Sites of Special Scientific Interest.

Commercial bait digging can lead to loss of habitat and food sources for many species, disturbance is caused to overwintering birds that feed on the mudflats.

All bait diggers are encouraged to follow the code of conduct produced by the Cornish Federation of Sea Anglers which requests everyone to:

- Back fill all diggings and put rocks back as you found them.
- Do not dig too close to boat moorings, piers, piles, quays etc.
- Do not dig in the upper shore areas as this is where lugworms generally breed.
- Do not take more worms than you can use.
- Leave undersized worms, 5" for lug and 6" for king rag. These are your future supply of bait.
- King Rag spawn in April and May, please do not dig in these months.

LUG



KING RAG



WILDFOWL & SHELLFISH



The Fal estuary is of national importance for the waders and wildfowl which winter in its sheltered creeks. Populations of black-tailed godwit in the Truro River reach nationally important numbers, and several other species including curlew, dunlin and redshank are of regional importance. The tidal mudflats of the Fal, especially around Malpas, Ruan and Restronguet Creek offer particularly good feeding grounds.

A number of fishing vessels of different types are based within the estuary, it is also a popular recreational fishing area. The estuary is designated a bass nursery area. The Fal also supports an oyster fishery based on natural stocks of the native European flat oyster. The oyster fishery is managed sustainably as it is carried out by sailing boats and haul tow punts. Some experimental rearing of a small quantity of pacific oysters takes place in the estuary, and a few cockle and mussel beds occur in the upper creeks, but these are not farmed commercially.

Shellfish beds around the estuary are monitored for health purposes.



Black-tailed Godwit

Curlew

PROTECTION



The Ports of Falmouth, Truro & Penryn are committed to the protection and conservation of the Fal estuary. They have produced an Environmental Management Plan, designed to protect the wildlife, water quality and the coastline we all enjoy so much.

Working in partnerships with other statutory authorities the Harbour Authorities are active members of the SAC Management Group, and through their day to day work seek to improve and maintain the high environmental quality of the Fal estuary.

You can play your part by respecting the estuary and keeping to the code of conduct identified in this leaflet.

This environmental code of practice is not only for the protection of this wonderful area but also to enhance your enjoyment of the estuary. Cleaner waters, cleaner beaches and unspoilt creeks are good for people as well as for wildlife.

The Fal Estuary is a special place - please help us to keep it that way.



Illustrations supplied by Cornwall County Council,
Tony Sutton, Roger Covey, Malcolm Ellis & The National Trust
Designed and produced by Cornwall County Council, Technical Services.
CCC wishes to acknowledge the financial support of English Nature.