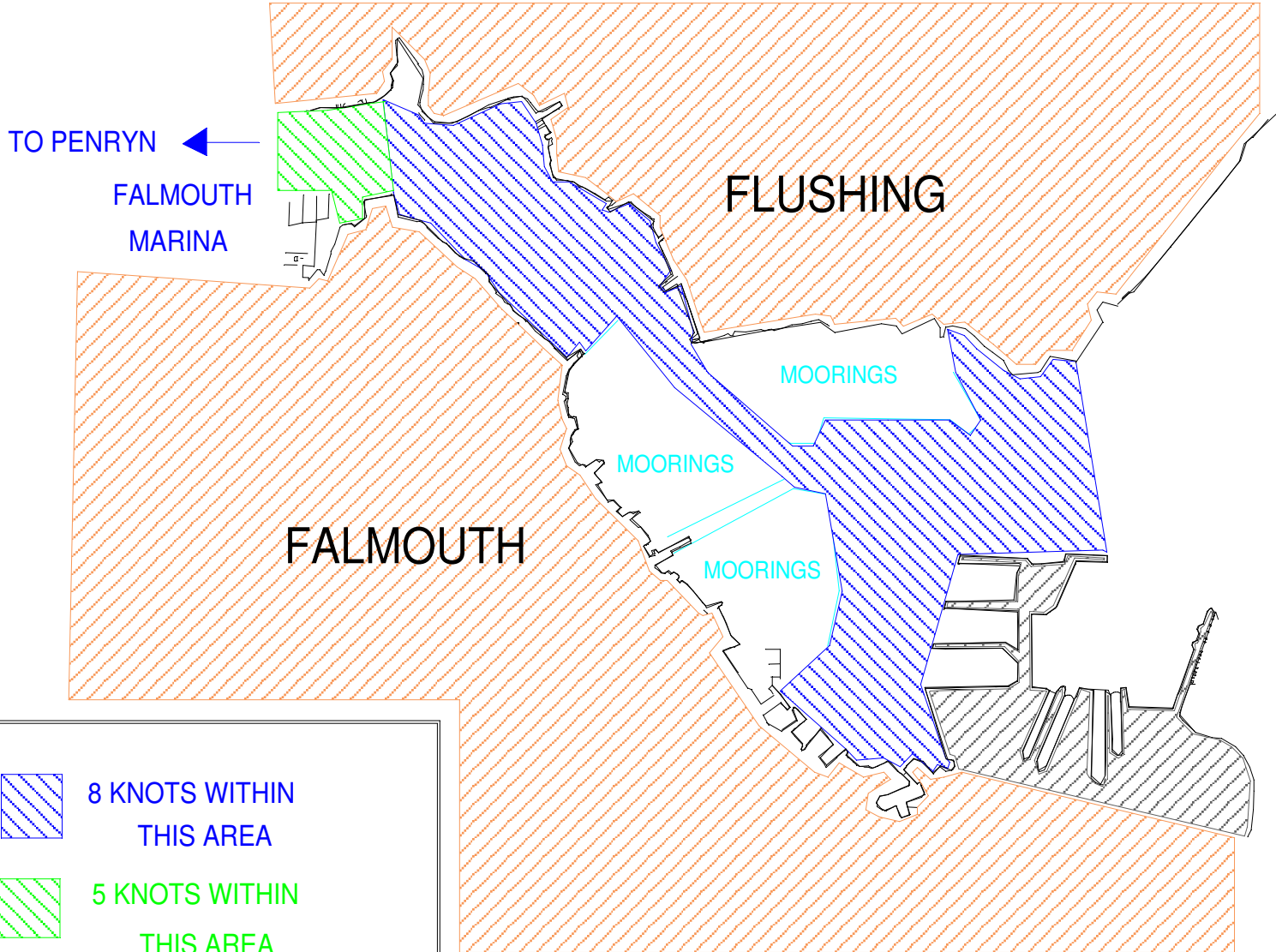

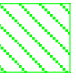


SPEED LIMITS WITHIN FALMOUTH HARBOUR



 8 KNOTS WITHIN THIS AREA

 5 KNOTS WITHIN THIS AREA

Refer to Harbour General Bye-Law No.14 for navigating through the mooring areas

Bye Law 14. Navigation through the mooring areas

- 14.(1) The master of a vessel shall not navigate in the moorings area except to such extent as may be necessary to navigate to or from a mooring or a landing place inside such areas.
- 14.(2) The master of any vessel shall navigate it with care and caution and at a slow speed in and near such areas.