

Appendix 6 - Maerl distribution in the Potential Beneficial Use Site

In order to establish the suitability of the area chosen as the Potential Beneficial Use Site a preliminary assessment of the video tapes has been carried out with particular focus on the distribution of live maerl.

The results of the initial assessment are shown in the table below. A figure showing the distribution of live maerl, at abundance of frequent or above, can be seen in Figure 1 and 1a (areas of frequent density are shown in purple, whilst dominant coverage is shown in red).

A significant amount of live maerl was observed in the potential beneficial use site. On all 4 video transects a wide distribution of maerl nodules was seen, suggesting that live maerl is present throughout the site. On video transects Ben2 and Ben4 maerl was present as a bed structure.

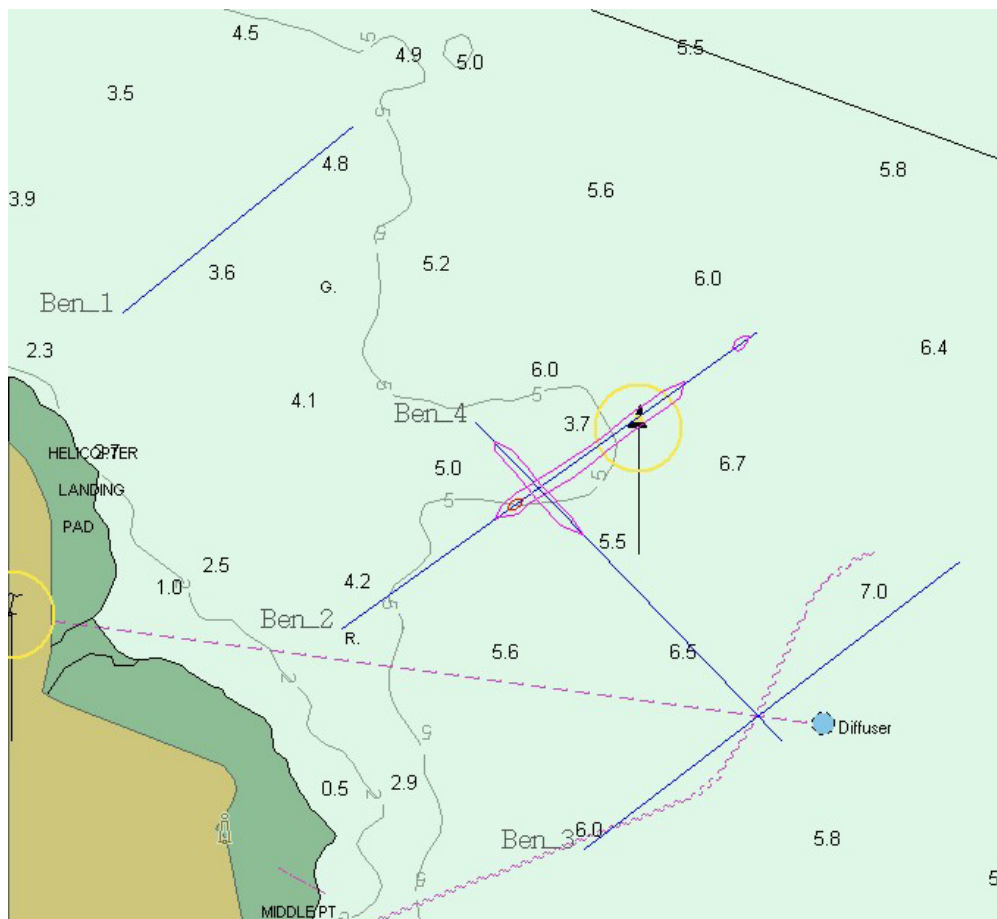


Figure 1. Map showing areas of significant maerl coverage

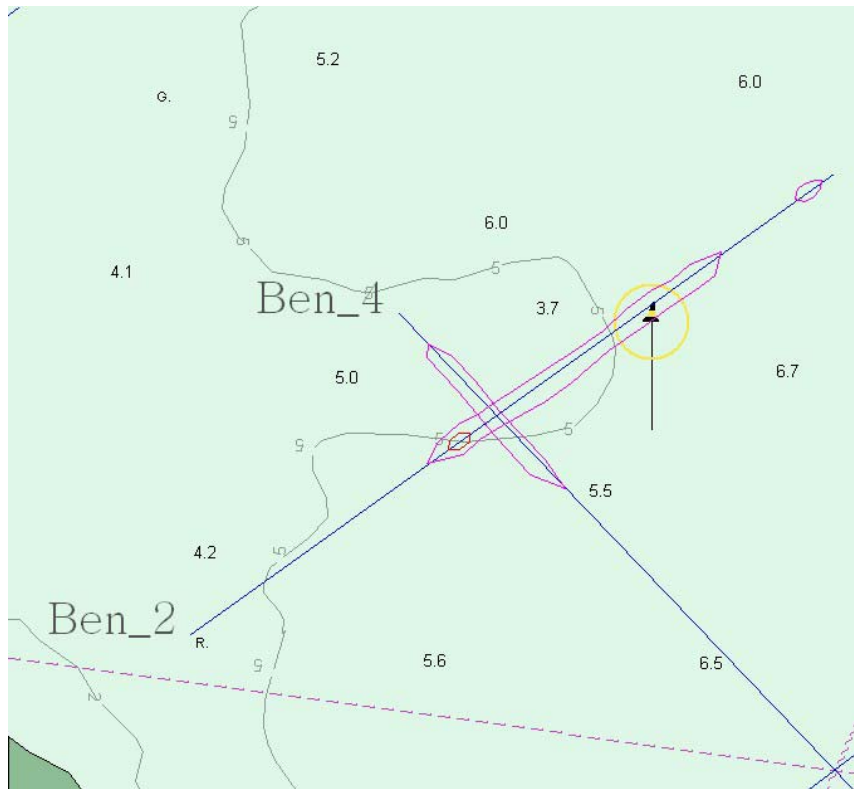


Figure 1a. Close up map showing areas of significant maerl coverage

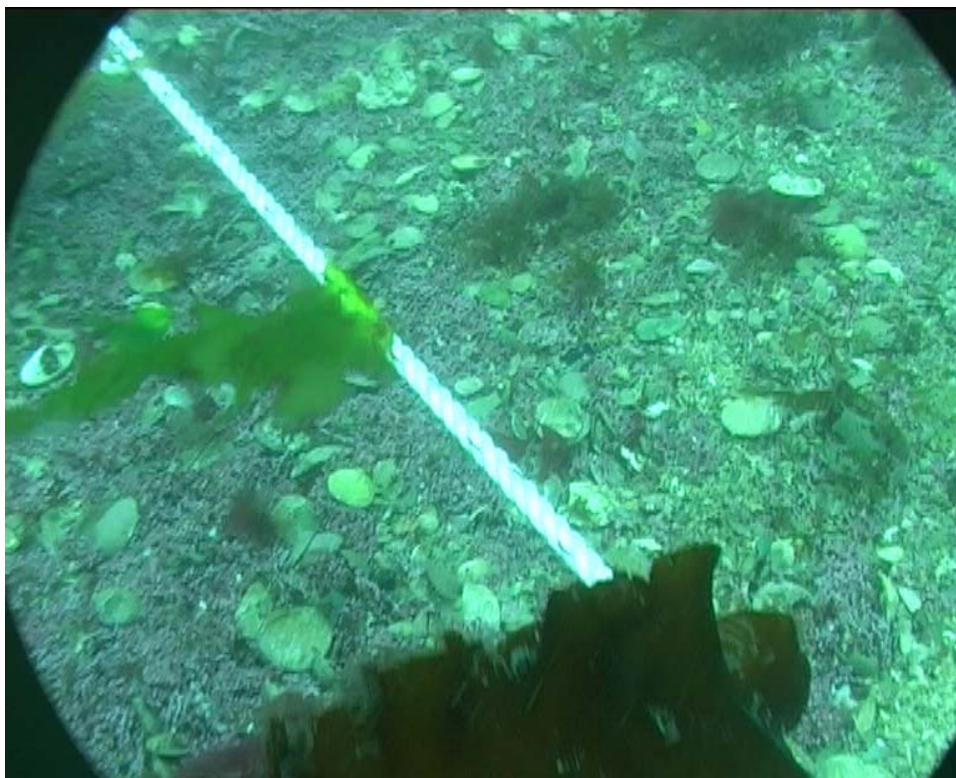


Figure 2. Frame grabs from the video giving an example of dominant coverage

Assessment of maerl coverage within the Potential Beneficial Use Site

Station	Direction of run	Counter	until	Live Maerl coverage%	notes
Ben_1	NE > SW	0:00:00	0:06:00	<1	Red and green soft algae, broken maerl and very infrequent small nodules of loose maerl
		0:06:00	11:00:00	1 to 5	Algae thins to sparse cover, dead maerl sediment with infrequent live nodules
		0:07:30		15	Patch of frequent maerl nodules
		0:11:00	19:43:00	1 to 5	Shells become abundant on sediment surface, with patches of abundant larger nodules of maerl
		end			
Ben_2	SW >NE	0:00:00			Red and green soft algae dominate. Sea bed obscured in most areas
		0:02:00	0:14:00	> 1	Where seabed is exposed a very small amount of small loose nodules live maerl can be seen on dead maerl and gravel.
		0:06:00			slate like rocks protruding surface sediment
		0:14:00		20	Where seabed exposed frequent large patches with 20% coverage of live maerl can be seen. Appear to be forming a bed in places
		0:15:00	0:18:00	80+	Live maerl common and some patches of large maerl structures with 80%+ coverage seen on exposed seabed.
		0:18:00	0:20:00	5	Nodules of live maerl becoming less frequent
		0:20:00	0:26:00		Soft algae dominate obscure seabed
		0:26:30	0:28:00	<1	Exposed sediment reveals rare to occasional live maerl nodules.
		0:28:00	::		Live maerl becoming more frequent with large nodules. Becoming frequent with patches of dense maerl nodules.
		0:32:00	0:36:00	1 to 5	Soft algae and seaweeds dominate. Maerl still present on exposed sediment. Occasional to frequent
0:36:00	0:40:00	1 to 5	Soft algae thins exposing occasional to frequent maerl		
		end			
ben_2a	NE > SW	0:42:00	0:45:00	1 to 5	Frequent live nodules on broken maerl and gravel with shells.

ben_4	NW > SE	0:00:00			Sediment made up by shells, stones, rocks and dead maerl, small nodules of live maerl present. Patches of thick soft algae and seaweed obscure seabed..
		0:02:30	0:06:00	1 to 5	Regular patches of reasonable coverage of live maerl with stones and shells. Seaweeds obscure seabed.
		0:03:40		20	patch with lots of stones and extensive live maerl
		0:04:25		30	example patch of live maerl
		0:06:30	0:18:00	1 to 5	Live maerl decreases in frequency on sediment, only significantly present in patches.
ben_3	SW > NE	0:00:00		< 1	Small maerl nodules occasionally on dead maerl and coarse sand and shells. Red and green soft algae.
		0:05:00	0:08:30	1 to 5	Patches of larger shell fragments and stones coincide with increase in frequency and size of maerl nodules.
		0:08:30	0:31:00	< 1	Alterative waves of coarse grand with shell fragments and stones with large shells with occasional to rare live maerl nodules